



WHAT IS ALL-IN?

ALL-IN: Advancing Language Learning for Inclusive Narratives

Mission

ALL-IN's mission is to promote inclusive communication and language practices through the development of innovative educational resources and an inclusive learning environment.

Vision

ALL-IN's vision is to create a world where communication is inclusive, fostering understanding, respect and appreciation for diverse identities and experiences.

OBJECTIVES

Creating a learning environment

To provide an inclusive learning environment by developing a digital Open Educational Resources (OER) platform in an open, free and accessible 24/7 format.

Raising awareness

Generating awareness and building trust between the public and the organisations participating in the project, informing and educating on relevant issues.

Enhancing the impact

Improving the impact of project initiatives and results, encouraging active participation, and promoting the adoption and utilisation of results.

Fostering inclusive communication

By spreading the key message that inclusive communication is not just about words: it is about fostering understanding, respect and acceptance for everyone.




Advancing Language Learning for Inclusive Narratives



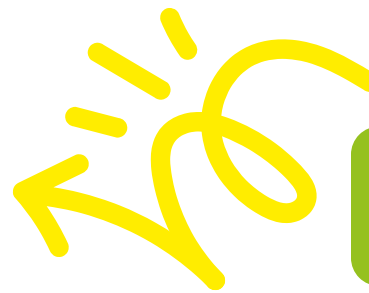
Co-funded by
the European Union

Funded by the European Union. Views and opinions expressed are however those of the author(s) only and do not necessarily reflect those of the European Union or the Institute of Youth (INJUVE). Neither the European Union nor INJUVE can be held responsible for them.



ASSESSMENT

TOOLBOX



PARTNERS

The **activities** are aimed at:

- Assessing the drivers and challenges for inclusive communication by conducting a comprehensive assessment of the factors that drive and hinder the adoption of inclusive communication practices.
- Identifying specific and relevant training areas. The insights gained from the drivers and challenges assessment are instrumental in determining the precise training needs. By identifying these areas, the basis for the development of the training curriculum is established.
- Facilitating the adoption of inclusive language and communication practices by assessing knowledge about factors that may promote or impede the adoption of such practices. This knowledge is invaluable in designing strategies and tools to promote the widespread adoption of inclusive communication.

The **objectives** of ALL-IN Toolbox are:

- To raise awareness about inclusive communication, fostering a cultural shift towards more inclusive language and communication practices.
- To create an innovative, interactive, stimulating and inclusive learning experience by incorporating elements of gamification and ensuring that participants actively engage with the content.
- To provide participants with tangible, actionable strategies and practical applications for implementing inclusive communication in their respective contexts. By offering tangible guidance and resources, the project empowers individuals and organisations to take concrete steps towards inclusivity.



CONTACT US

- allin-inclusion.eu
- allin.euproject@gmail.com
- FB: [@allin.euproject](https://www.facebook.com/allin.euproject)
- IG: [@allin.euproject](https://www.instagram.com/allin.euproject)



Funded by the European Union. Views and opinions expressed are however those of the author(s) only and do not necessarily reflect those of the European Union or the Institute of Youth (INJUVE). Neither the European Union nor INJUVE can be held responsible for them.